

HWP-Pro

Touch protection

- Protection of hot-wire probe tips
- **Two designs** to fit the different probe types
- Easy application



Description

The touch protection safely protects the hotwire probe tip when the probe is not in operation. The device is made of PA plastic. To put on the protection, the probe is inserted into the slot and pulled back into the protective cover. Finally, the probe is secured with the built-in twist lock.

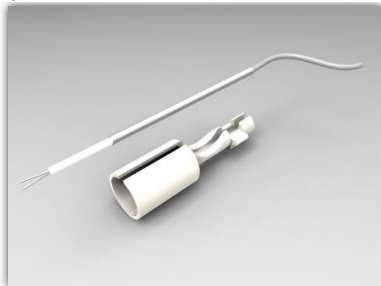
The protection is available in two designs. For probes of the type HWP10/90 and HWP10/45 the narrow version HWP-ProS is necessary. All other probes require the larger version HWP-ProM.

Order Options

HWP-ProS	for HWP10/90 and HWP10/45
HWP-ProM	all HWP10/xx

Handling (Exemplary for ProM)

1) Hot-wire probe and touch protection



2) Insert and position the probe



3) Pull back and fixate the probe with thumb



4) Secure with twist lock

